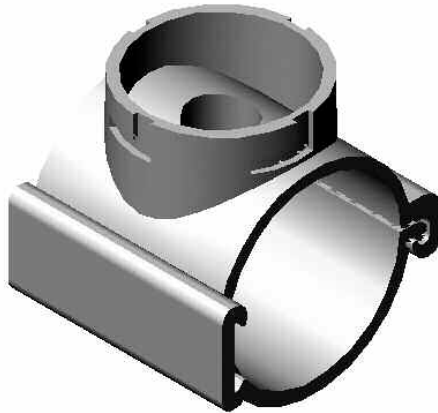


SSI™ ACCESSORIES

SADDLES

Patented Quick Connect Saddles mount on nominal US 4" or metric 110mm OD pipe. They allow retrofit of 12" to 9" discs without changing the piping system.



Quick Connect Saddles are made of polypropylene, and install into a 1-1/2" (38mm) hole.

GROMMETS

Grommets are available for round plastic or square stainless steel pipes in US or Metric dimensions. Installation is simple.



Multiple sizes are available based on pipe wall thickness. Grommets install into a 1-3/8" (30mm) chamfered hole.

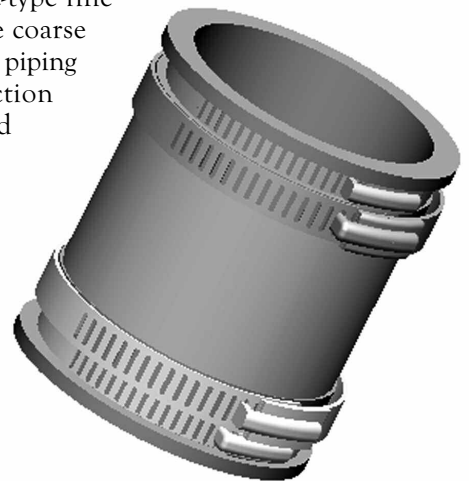
EXPANSION JOINT OPTIONS



Positive locking bolted stainless steel couplings are suitable for drop pipes, stainless joints, and for all tube diffuser piping systems to restrict header pipe rotation.

Expansion Joints are available in a positive locking design or in flexible PVC with a stainless steel shell. SSI recommends the flexible expansion joints for disc installations and the positive locking type for tube diffuser projects.

Slotted band joints with stainless steel shear rings are suitable for disc-type fine bubble and cap-type coarse bubble lateral plastic piping systems, in conjunction with SSI's fixed and guide support stand system to manage thermal expansion and contraction.



Please see reverse for additional technical data



STAMFORD SCIENTIFIC
INTERNATIONAL
INCORPORATED

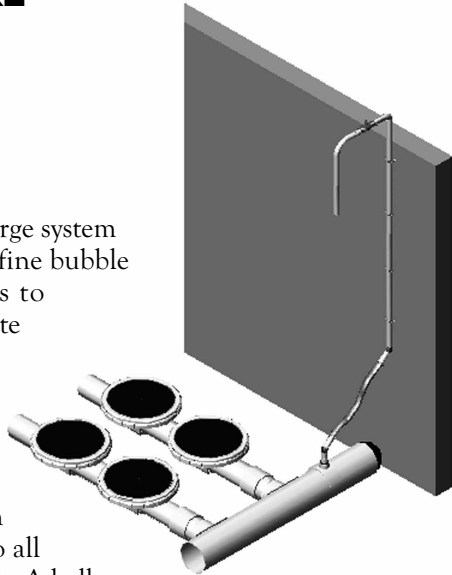
+1-845-454-8171 TEL
+1-845-454-8094 FAX

4 TUCKER DRIVE
POUGHKEEPSIE, NEW YORK 12603 USA
www.StamfordScientific.com
EMAIL: INFO@STAMFORDSCIENTIFIC.COM

SSI™ ACCESSORIES *continued*

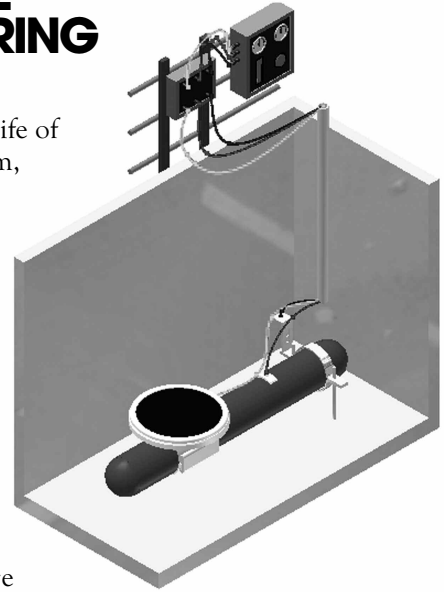
MOISTURE PURGE SYSTEM

An airlift type purge system is used in all SSI fine bubble aeration systems to remove condensate from the piping system. Purging entrained water helps ensure even air distribution to all diffusers in a grid. A ball valve is supplied with the system and is opened manually. Continuous purge systems are available for retrievable-type aeration systems, or where it is not possible to fasten a purge line to a tank wall.



PRESSURE MONITORING SYSTEM

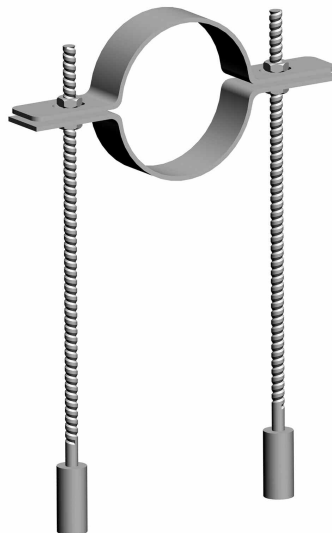
Throughout the life of an aeration system, oxygen transfer efficiency may decline somewhat when diffusers become fouled, but headloss can increase significantly, which can significantly increase energy costs. A pressure monitoring system enables the operator to better determine the optimal cleaning frequency of the membranes. The fouling rate can vary by aeration zone, hence it is recommended to install at least one system in each zone.



SUPPORT STANDS

Support Stands are available in 304 SS, 316 SS or in ABS plastic. SSI's standard is 304 SS with drop-in anchor bolts. In our aeration piping systems, support stands fulfill the dual role of anchoring pipes to the floor and controlling thermal expansion and contraction. Contact factory for more details about how and where to place guide and fixed stands.

Special support stands for uneven tank floors, for installing into concrete ballast forms, and for tanks with significant channel velocity (with lateral supports) are available.



ABS support stands (*below*) are primarily used with disc diffusers and plastic pipe, where a low capital cost is the primary objective.



STAMFORD SCIENTIFIC
INTERNATIONAL
INCORPORATED

+1-845-454-8171 TEL
+1-845-454-8094 FAX

4 TUCKER DRIVE
POUGHKEEPSIE, NEW YORK 12603 USA
www.StamfordScientific.com
EMAIL: INFO@STAMFORDSCIENTIFIC.COM